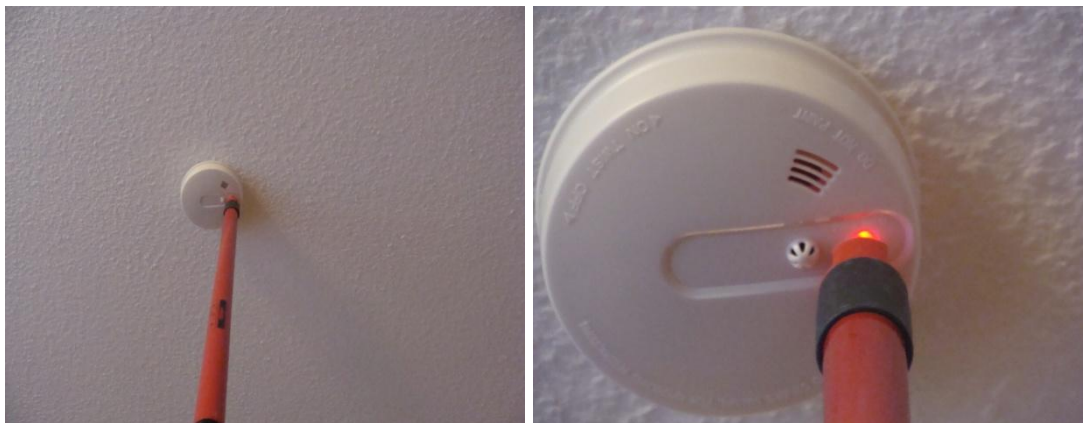


As of August 2014 our smoke detector housings are designed so that you no longer need a ladder to press the test button. With every conventional broomstick, you can now carry out the regular functional test. This is convenient, safer and saves time. For a better overview of the regular inspections, all AMG fire alarm systems are provided with a checklist for completion.

Information about the smoke detector



We use a special coding method so that there can be no conflicts with other radios. Each smoke detector has its own code, up to 10 smoke detectors with different code are registered to 1 control panel. These sets can be expanded with any number of sensors.

Smoke detector by law:

In many states, smoke detectors are already required by law in new buildings and conversions! The smoke detectors comply with the statutory directives in accordance with DIN EN 14604 and DIN 14676. The smoke detectors comply with the latest EU standard, in addition to the smoke detectors, a heat sensor is integrated, which triggers an alarm at 60 degrees (not every fire has a strong smoke, in which Case reports the integrated heat detector).

The smoke detectors work with a replaceable 9 V lithium battery for about 5 years, the smoke detector sounds acoustically, when the battery gets low, you have up to 4 weeks left to change the battery.

Functions of a smoke detector:

Smoke alarms save lives are easy to install and technically up to date in our shop. The high-quality smoke detectors in the AMG Shop comply with the statutory DIN standard EN14604.

The optical principle of the smoke detector enables reliable smoke detection and corresponding alarm message. Battery operated, they also work in case of power failure.

An upcoming battery replacement is indicated by a warning signal. Retrofitting in residential, office and other object areas is unproblematic. Cable clutter does not exist, they are to install without additional cable routing.

By radio, several smoke detectors are connected to a central office. Regularly emitted light rays that do not hit the photo lens in the normal state. A false alarm (such as cigarette smoke) is almost impossible. For strong cooking vapors (kitchen), the alarm can be temporarily muted and less sensitized by pressing the test button. If the smoke concentration is too strong, an alarm is triggered again. A Muting is then no longer possible as long as there is smoke or steam in the measuring chamber. The smoke detector automatically returns to its basic calibration after approx. 10 minutes. A cooker hood in the kitchen minimizes the risk of false alarms. You can also attach a detector near the kitchen. Smoke detector for the home: Most fatalities in fires happen statistically during sleep at night.

Often death does not occur by fire, but by the fast and silent flue gas, the odorless gases carbon monoxide and carbon dioxide. After a few minutes, this mixture is absolutely deadly!

Smoke detectors are not expensive:

In our shop you will find high-quality smoke detectors in a set with an alarm control panel. They have no power cables, are battery operated and even radio controlled. We guarantee a high longevity of the battery, if a change is necessary, the device signals this with a warning tone. Our proven smoke detectors have a test button for checking the smoke chamber. Thus, from time to time you can check the reliability of the detectors for a possible emergency.

The minimum equipment is:

According to the fire department in each living room a smoke detector with the exception of the bathroom and kitchen. Smoke detectors are always placed at least 50 centimeters from a wall in the middle of the room on the ceiling, as smoke rises to the top. Strong drafts impair the error-free operation of the built-in sensors.

To update:

After about ten years, smoke detectors are replaced, they get dirty over time, and their sensitivity diminishes or gets lost altogether. Thus, the early detection of a fire is no longer given.

Information:

Smoke detectors with a built-in battery are often offered on the market for 10 years. Our smoke detectors with built-in heat detector, we have deliberately equipped with a **replaceable 5 year battery**.

The smoke detectors with 10 years of operation are a promise of the manufacturer, but the lifetime of batteries is not guaranteed. The legal warranty expires after 2 years. If the smoke detector stops operating after a few years because the battery is depleted of high power or defect, the smoke detector can only be disposed of.

A battery change is not possible because the battery is permanently installed. As a result, a new smoke detector must be procured and possibly integrated into the radio network.

Is a wireless networking of smoke detectors, smoke u. Heat detectors or fire detectors useful together?

In many shops smoke detectors, smoke u. Heat detectors or fire detectors are offered which alert each other via radio signal when 1 detector triggers an alarm. We consider such interconnected detectors dangerous for two reasons:

1) In case of fire, all networked smoke detectors trigger an alarm. This makes orientation about the actual location of the fire impossible, because an alarm is signaled from all rooms with smoke detectors.

2) In search of the real source of fire you have to search every room, which costs valuable time.

And every fire brigade strongly advises against opening a door in a fire. Even a small smoldering fire can get oxygen when the door is open and you can hit a flame front.

For this reason, we have developed a safe fire alarm system, which does not have these disadvantages and exposes you to no danger. The fire alarm system BMS-03, BMS-05, BMS-10 and BMS-20 consists of a control panel and the corresponding number of wireless smoke detectors. Any number of smoke detectors or wireless CO carbon monoxide detectors can be taught-in to the control panel. There are 10 zones available to visually indicate the triggering smoke detector. For example, if you use 20 smoke detectors on one control panel, 2 smoke detectors will be displayed in one alarm zone.

Fire Panel

Ideally, the center should be installed near the bedroom, as most burnt victims are suffocated by toxic gases during sleep, this should avoid the control center. The control panel will immediately sound an alarm when one of the wireless smoke detectors sends an alarm signal. In addition, the number of the relevant smoke detector is displayed, on the overview table you can see immediately in which room it is burning.

The range between the control center and smoke detectors is approx. 100 m thanks to the use of state-of-the-art radio technology, and radio transmission over two floors is no problem. To increase the range of the wireless smoke detectors, bridge signal transmitters are available, which are used halfway between the smoke detector and the control panel.

The bridge signal transmitter can receive all the signals of the surrounding smoke detectors and transmit them to the central office in an amplified manner. In this way even difficult structural environmental conditions can be networked by means of a radio signal.